



founded 1970

# THE BULLSHEET

Official News Bulletin of the  
Texas DX Society

An ARRL Affiliated Club



August 1988  
Volume XII  
Number 8

=====  
The Texas DX Society, P.O. Box 540291, Houston, Texas 77254-0291  
=====

## Officers and Directors

President: NR5M, George DeMontrond      Bullsheet Editor: K2TNO, B. Schrader  
V. President: KB5FU, Galen Graff      DX Chairman: N5DC, Jim Lane  
Secretary: KE5IV, K. Grabenstein      Repeater Chairman: N5DU, Bob Evans  
Treasurer: KG5U, Dale Martin      Field Day Chairman: K5GB, Butch Barber  
Contest Chairman: K5GN, Dave McCarty      Conv. Chairman: W5ASP, Joe Staples  
=====

## ANNOUNCEMENTS

MEETING NOTICE - The Texas DX Society meets the second Friday of each month except when changed by the Board of Directors. The August TDXS meeting will be held Friday, August 12, at 7:30 P.M. at DeMontrond Buick Company, at 14101 North Freeway. Take exit 63 (Airtex).

WEEKLY DX & CONTEST NETS- Each Tuesday night at 9:00 p.m. the Club sponsors a net on 147.96/.36. Participation by non-members as well as members is welcomed. The purpose of the net is to facilitate the exchange of DX, contest, and Club information within the amateur community. The Club's Packet Cluster DX bulletin board is currently up and running on 144.95 using the call NZ5I. Use AX25 level 2 protocol; it can be accessed via ALD or HEMP digipeaters if not direct. Your active support of these activities is encouraged.

BULLSHEET MAILING LIST - It is the club's desire to provide the Bullsheet free to all amateurs in the area with an interest in DXing and/or contesting. Donations to defray the publication and mailing costs are appreciated. If you would like to receive our newsletter, simply send your name, call, and mailing address to the Texas DX Society, P.O. Box 540291, Houston, Texas, 77254-0291. Visitors at the regular club meeting can request the monthly newsletter by providing their mailing address on the sign-in sheet. Articles or other newsworthy items from club members and other interested amateurs are hereby solicited by your editor. Send articles via FAX (713-790-1275) addressed to "Dr. William Schrader."

THE PRESIDENT'S CORNER  
(by George DeMontrond, NR5M)

In case you haven't heard my company packed its preverbial tent and moved north last week. The closing of the Southwest Freeway Motorhome lot means the search for a new "permanent" meeting place must resume. The August meeting will be in the conference room in the used car building at DeMontrond Buick Company. Take I-45 north to exit 63. Go over the freeway and stay on the inbound feeder till you reach the dealership. At least now K5LZ0, AK5B and the rest of the TDXS Yankees can't complain that we never try to accomodate them.

At the last meeting we suggested an intra-club competition for sweepstakes. With K5GN's assistance the format is taking shape. A full briefing will be given at the August meeting but here are some tidbits to ponder:

The club will be divided up into four teams for SS competition. This will be done at the September meeting. Each club member will be assigned a rating factor for both CW and phone based on past performance and current situation. The four team captains will be elected/selected at the August meeting. It will be their job to button hole prospective draftees prior to the September meeting to determine the level of each member's interest.

"The draft" will be held at 8 P.M. on Friday, September 9th (at the meeting). Each captain will need to carefully choose his team because the "steaks" are high. The members of the two top scoring teams and their spouses/dates will be treated to dinner at the January banquet by the club. The winners will eat steak; the losers crow. What better way to breed hate and discontent within the club. If you were wondering when the next fist fight was going to come along, come to this month's meeting for all the details. See you there.

CONTEST CORNER  
(de Dave McCarty, K5GN)

The dog days of summer are here. I wonder if the sunspot epidemic is responsible for the hot weather? As long as the A-C is working, its cool in the shack and hot on the air.

Conditions over the pole have been outstanding. (This really helped the IARU HF contest.) Conditions are predicted to be above normal to high normal during WAE. Check it out!

August brings the two big continental DX contests, WAE (Europe) and AA (Asian). These are great for tuning up those fixed array antennas or just for a concentrated look at the operating habits of the guys on the other side. Conditions are terrific - this will bring out good participation. I think the QTC rule in WAE is confusing, so look for a discussion on it later in the issue.

SHORT PATH

Highlights of August: continental contests, CW-style. September is Sprint month!

- 8/13-14 WAE (European) DX Contest, CW.
- 8/20-21 KCJ CW Test. (?)  
NJ QSO Party.
- 8/27-28 AA (Asian) DX Contest, CW.  
GARTG RTTY Part 3.
- 9/10-11 WAE (European) DX Contest, SSB:
- \*\*\* 9/11 North American Sprint CW.
- 9/17-18 Can-Am Contest, SSB.
- \*\*\* 9/18 North American Sprint SSB.
- 9/24-25 Can Am Contest CW.

WAE: 30 hours/36 for single op all band/high band, 36 hours multi-single starting 1200Z Sat., 3 off times, Europe only 80-10, 59001+, (1 PT./QSO + 1 PT/QTC) x WAE band countries. (Multiply 80M mults by 4, 40M x 3, 20-10M x 2). See below for QTC discussion.

AA: 48 hours SOSB/SOAB/MOMT, OZ Sat., Asia only 160-10, 599+ age, (3 Pts. 160 + 2 pts 80+ 1 pt else) X (Asian Prefixes per band). Separate logs per band.

SPRINT

This is the contest that tests your ability to concentrate, hunt + pounce, and put into your operating the maximum of effort. I find the CW test a real challenge. The 'phone test is getting to be a really fun event. Even if you think you are "not good enough" to make a decent score, you should try it just for the fun of it.

Sprint teams will be set up at the August meeting and confirmed at the September meeting. I've bought tickets to Cancun for the weekend of CW Sprint (hoping to get another ticket while I'm there) and will miss these meetings, so I need a volunteer to coordinate the teams. If you're interested, call me at 328-6830/421-6144.

CAN-AM - (See p. 103 August QST) 24 hours, SOSB/MOST, from 1800Z Sat. 59001 (W's 1 pt. phone, 2 pts. CW; VE's 2 pts. phone 3 pts. CW) x (50 states + 10 provinces + 2 territories + 1 island + 2 possessions). All single-banders compete against each other; guest ops are multi-ops.

### LONG PATH

In September you begin to hear the rumblings of the approaching fall contest season. Conditions begin to sound like autumn - 10M opens to the north, 15M reverts to the single morning DS openings, and 40M begins to get quiet. When that first Northern blow through, take a whiff - you may smell Sweepstates in the air!

### THE FALL MAJORS

Oct. 29 - 30	CW WW DX SSB
Nov. 5 - 6	SS CW
Nov. 19 - 20	SS Phone
Nov. 26 - 27	CQ WW DX CW

This fall there will be an intra club competition in the ARRL Sweepstakes. You will hear more about this at the meetings and in the next issue of the BULLSHEET. Can-Am can be a good tune-up for the SS melee. A small-scale competition will be held in these contests as well.

### RUMORS

IARU was blessed by fantastic conditions, especially for northern US stations. However, stateside participation was low. Record scores will be posed by several stations probably in all categories. I don't have details, but locals KG5U (CW), WB5BIR (mixed), K5DX (multi), N5GA (multi), and NR5M (multi) all broke 1000 QSO's and 100 mults. Lots of fun!

K2TNO was heard on the air in the CH CW test. Anyone else?

### High-claimed WPX SSB:

# 1 USA/SOAB	NR5M (Wow!)
# 7 USA/10M	KC5CP
# 9 USA/MOST	NZ5I (Lumberyard).

### High-Claimed CQ 160:

(phone) K5NA	#1 USA Multi
(CW) K5NA	#5 USA S.O

No locals in the 1987 AA results.

### WRAP UP

Get your IARU logs in ASAP to:

IARU HQ  
Box AAA  
Newington, CT 06111

See you later!

- K5GN

## QTC's

A unique rule in the WAE contests is the QTC. QTC is a report made by a non-European to a European of a QSO he made previously with a different European station in the contest. The report is in the form of time (UTC) and call number (received in the exchange from that station). QSO's may only be reported once. Only 10 QTC's may be given by the non-European to any single European station. QTC's are grouped in Series. QTC 4/8 means that you are sending your fourth series of QTC's which contains 8 QTC reports.

Since QTC's count the same as QSO's, this effectively allows you to double your score. The only problem is the hassle with paperwork. The best thing to do is to mark the series number next to the QSO in the log, and keep a QTC dupesheet for writing down the call and # of QTC's sent to each station.

JARL ASIAN LIST

A4	HS	UF	XX9	70
A5	HZ	UG	XZ	8Q
A6	JA	UH	YA	9K
A7	JD1(Ogasawara)	UI	YI	9MZ
A9	JT	UJ	YK	9N
AP	JY	UL	ZC4/5BA	9V
BV	OD	UM	IS	A15
BY	SZ	V85	3W	
EP	TA	VU	4S	
HL	UA9-0	XU	4W	
HS	UD	XW	4X/4Z	

WAE EUROPEAN LIST

C31	GM	JW -Bear	ON	TA1	UQ
CT	GM-Shetland	JW-Svalbard	OY	TF	UR
CU	GU	UX	OZ	TK	Y
EA	GW	LA	PA	UA1346	YO
EA6	HA	LX	SM	UAZ	YU
E1	HB	LZ	SP	UA1(FJL)	ZA
F	HBO	OE	SV	UB	ZB2
G	HV	OH	SV5(Rhodes)	UC	1A0
GD	I	OHO	SV9(Crete)	UN	3A
GI	IS	OJO	SY(Athos)	UO	4U1ITU
					4U1VIC
GJ	IT	OK	T7	UP	94I

Notes: ask the GM, JW stations! UZ2F=UAZ; FJL usually UA10;  
UA1N....., UZ1N..=UN1.

DX ROUND UP  
(by Jim Lane, N5DC)

WHO'S THE 4W??????? Continuing saga from last month's Bullsheet. I have heard any number of the local guys work 4WOCRC and it is anybody's guess if he (or she) is a good one. Oh well, WFWL. My worry about the SORASD continues as I finally got an envelope back from the Lynx DX group, with the top slit open and you can guess the rest..... an empty envelope! I guess it means they are trying. According to NN50 they respond promptly if you include lots of Green Backs.

As you read this we have the new Software for the cluster. After Trey (WN5KKN) puts some touches on the oblast listing, I will get it from KE5IV and get it up and running. Remember the new call will be K5DX not NZ5I. I am concerned about the lack of use for the cluster. I see about as many non TDXS members using it as members. We spent a lot of time and money getting the system up and running, so come on gang, lets go! I realize it will get a good workout when some of the contests roll around, but it is pretty quiet now. Fire up your TNC's and get it cooking. If you need help get in touch with any of the users or myself and we will get you going. I suspect, the users guide for the new version has changed a little, but for the most part it will be the same. Incidentally, I am taking it off the air when we have thunderstorms in the area. I would hate for Kenny's Compaq as well as the TNC and gear to glow in the dark like K5LZ0's TS930!

If you will remember back to the last meeting I put two questions to those in attendance at the meeting from Jim Haynie, WB5JBP West Gulf Director. Jim tells me that almost all of the sentiment (including TDXS input) was in favor of NOT moving the 40 meter phone band any lower. The vote by all ARRL Directors reflected that fact. I want to thank Jim for giving us a chance to get our two bits worth in on the subject.

Bullentin Browsing

TL8 - TL8DS and TL8SC are active 21240 1930Z-2030Z QSL K4UTE.  
TN - 9Q5NW/N4NW Tom will attempt to activate TN4NW August.  
8Q - JS3ELH and several ops August 9 - 14 QSL CBA.  
YI - JR1ABI September 5 - 8.  
CY9 - St. Paul August 12 (callsigns not available yet).  
7X - 7X2VJK 21,017 daily 1730Z QSL CBA.  
UM8 - UM8MDX 21,205-21,235 0200Z QSL Box 88.  
9K - 9K2SH 14,252 0030Z QSL OE6EEG.  
EA9 - EA9FT 14025-035 0001Z QSL CBA.  
TA - TA2KC August 13-14 European CW Contest.

In closing, sorry to hear about WA9VLI and his bum shoulder. It looks like he is QLF. Did we have a little glass of wine before the fall Steve????

See you in the pileups!

WHO'S WHO ON TWO  
(de Tom, K5RC)

Here's a handy list of repeaters in this area, arranged by either QTH (left side) or QRG (right side).

(Editor's note: It is not true that Tom worked up this list by QSO'ing every repeater! I never pick on an invalid.)

HOUSTON AREA TWO METER REPEATERS									
BY CITY					BY QRG				
QRG	CALL	CITY	SPONSOR	PTCH	QRG	CALL	CITY	SPONSOR	PTCH
146.98	N5FJX	ALVIN			145.21	KA5POH	WHARTON		
147.22	WB5NVH	ALVIN			145.23	WB5LIN	HOUSTON	TIARC	
146.72	W5BZO	BAY CITY	MCARC		145.29	K5DAH	PASADENA		
146.78	WA5JDI	BAYTOWN			145.31	WD5CFJ	CONROE		
146.82	K5GZR	BELLAIRE			145.33	WA5DOS	HOUSTON	HTPARC	CLSD
145.39	WD5JJS	BRENNHAM	WCARC		145.35	W4MGW	HOUSTON		
147.26	WB5RFQ	BRENNHAM	BARC	OPEN	145.35	W5USD	TRINITY		
146.64	W5RRR	CLEAR LAKE	JSCARC		145.37	WA5KVS	PASADENA		CLSD
146.90	KB5NX	CLEVELAND	SHARK		145.39	WD5JJS	BRENNHAM	WCARC	
147.18	N5KV	CLUTE			145.39	KA5QDG	HOUSTON		CLSD
147.14	K5KZP	COLUMBUS	CCARC	OPEN	145.41	K5CA	DICKINSON		
145.31	WD5CFJ	CONROE			145.43	KA5BIP	HOUSTON		
147.02	WA5QKE	CONROE		OPEN	145.45	WB5RDK	HOUSTON	STYECG	EMRG
146.74	KA5MLJ	CYPRESS			145.47	W5RNK	HOUSTON	NERA	
146.80	KE5QB	DAYTON			145.49	WD5BPB	PEARLAND		
145.41	K5CA	DICKINSON			146.62	N5GEB	HOUSTON		CLSD
147.38	N5KV	FREEPOR	BRC		146.64	W5RRR	CLEAR LAK	JSCARC	
146.68	KB5CY	GALVESTON		CLSD	146.66	WA5KXG	HOUSTON		
147.04	W5TCI	GALVESTON			146.68	KB5CY	GALVESTON		CLSD
145.23	WB5LIN	HOUSTON	TIARC		146.70	WD5EFC	HOUSTON	HTTY	RTTY
145.33	WA5DOS	HOUSTON	HTPARC	CLSD	146.72	W5BZO	BAY CITY	MCARC	
145.35	W4MGW	HOUSTON			146.74	KA5MLJ	CYPRESS		
145.39	KA5QDG	HOUSTON		CLSD	146.76	WA5JCI	SUGARLAND		
145.43	KA5BIP	HOUSTON			146.78	WA5JDI	BAYTOWN		
145.45	WB5RDK	HOUSTON	STYECG	EMRG	146.80	KE5QB	DAYTON		
145.47	W5RNK	HOUSTON	NERA		146.82	K5GZR	BELLAIRE		
146.62	N5GEB	HOUSTON		CLSD	146.84	W5DWI	HOUSTON		
146.66	WA5KXG	HOUSTON			146.86	W5RJV	HUNTSVILLE		
146.70	WD5EFC	HOUSTON	HTTY	RTTY	146.88	K5VQY	HOUSTON		
146.84	W5DWI	HOUSTON			146.90	KB5NX	CLEVELAND	SHARK	
146.88	K5VQY	HOUSTON			146.94	K5YSE	HOUSTON		
146.94	K5YSE	HOUSTON			146.96	WA5BUB	HOUSTON		
146.96	WA5BUB	HOUSTON			146.98	N5FJX	ALVIN		
147.00	N5KV	HOUSTON	TIRS		147.00	N5KV	HOUSTON	TIRS	
147.06	KB5ZU	HOUSTON			147.02	WA5QKE	CONROE		OPEN
147.08	W5ATP	HOUSTON		OPEN	147.04	W5TCI	GALVESTON		
147.10	WB5BDX	HOUSTON			147.06	KB5ZU	HOUSTON		
147.24	W5WVR	HOUSTON		CLSD	147.08	W5ATP	HOUSTON		OPEN
147.32	WB5MUI	HOUSTON	ECHO	OPEN	147.10	WB5BDX	HOUSTON		
147.36	K5DX	HOUSTON	TDXS		147.12	WB5WV	PASADENA		CLSD
146.86	W5RJV	HUNTSVILLE			147.14	K5KZP	COLUMBUS	CCARC	OPEN
147.20	W5HZ	KATY	KARS		147.14	WB5BMB	TEXAS CITY		
147.26	KD5MV	LAPORTE		CLSD	147.18	N5KV	CLUTE		
147.18	WA5ABA	NEW WAVERLY			147.18	WA5ABA	NEW WAVERLY		
145.29	K5DAH	PASADENA			147.20	W5HZ	KATY	KARS	
145.37	WA5KVS	PASADENA		CLSD	147.22	WB5NVH	ALVIN		
147.12	WB5WV	PASADENA		CLSD	147.24	W5WVR	HOUSTON		CLSD
145.49	WD5BPB	PEARLAND			147.26	WB5RFQ	BRENNHAM	BARC	OPEN
147.30	WB5TUF	ROSENBERG			147.26	KD5MV	LAPORTE		CLSD
146.76	WA5JCI	SUGARLAND			147.30	WB5TUF	ROSENBERG		
147.14	WB5BMB	TEXAS CITY			147.32	WB5MUI	HOUSTON	ECHO	OPEN
147.38	WB5ZMV	TOMBALL			147.36	K5DX	HOUSTON	TDXS	
145.35	W5USD	TRINITY			147.38	N5KV	FREEPOR	BRC	
145.21	KA5POH	WHARTON			147.38	WB5ZMV	TOMBALL		

SIMPLE MODS FOR THE HEATH SB-220:  
HIGHER RELIABILITY WITHOUT AFFECTING RESALE VALUE  
(de Mark, WB8JKR - Reprinted from  
The Mad River Flash Vol. 10, July 1988.)

Power Supply Protection

Install a 20 ohm 20 watt resistor in the B+ line by removing the short blue wire between HV board hole J and feed thru insulator CK. Install the resistor in its place. This will protect the H.V. supply and the tubes in the event of an internal tube flashover. (Manual ref. p 45, pictorial 4-8.)

T-R Relay Contact Sequence

Relay contacts 2 and 5 are the output contacts for the amp. Bend the N.O. Contact #5 up slightly. This will allow the common contact on the output side to "make" before the input contact, thus preventing hot switching of the relay. (Manual ref. p 49, pictorial 4-11 and 4-12.)

Spike Protection for Supply

Install a 510 K .5 watt 5% resistor and a .005uf 1KV disk across each diode on HV board. I also recommend replacing each diode with a motorola Hep-170 or =. Install a 130 vac MOV between each circuit breaker (lug 2) and chassis ground. (Manual ref. p 49, pictorial 4-13.)

Meter Protection

Place a cross-connected pair of diodes (Hep-170) across each meter. These will conduct under gross current conditions and protect the movements. (Manual ref. p 45, pictorial 4-8.)

ALC Modification

Replace R5, the 33K resistor, with a 25K linear taper pot. The ALC is now adjustable from 0 to approximately - 55 volts and can be adjusted to work with any rig. Mount the pot on the rear panel above the plate transformer and run leads thru hole Y. (Manual ref. p 49, pictorial 4-10.)

Cooler Tubes

With glass tubes, infrared rays can be reflected back to the plate by the shiny chassis walls. The tube(s) should be placed at least 1/2 their diameter from such walls to cut down on heat reflection. I would also suggest painting the inside of the final compartment around the tubes with flat black engine paint. This can reduce internal tube temperatures substantially.

Longer Filament Life

Filament failures occur 90% of the time at turn-on. Some of the stress can be eliminated by installing a standby switch so the amp can be switched out of line without turning off power. We don't really want to alter the front panel in order to preserve resale value. By moving the filament transformer back up against the filter bank bracket, enough room is gained to install a 100K pot with a built-in switch in place of the old sensitivity pot. Cut the switch lugs so they just protrude from the switch. Wire the pot as it was before, and wire the switch into the blue wire that goes from the relay control jack "X" pin.

1. Another way to do this is to hard wire the SSB/CW switch lines to SSB (the new power level allows this) and use this switch for operate/standby. However you lose control of the plate voltage level. In tuning the amp in the SSB mode, maximum plate current after tuning should be 660 to 700 mA. (Manual ref. p 49, pictorial 4-12.)



Plate Tune Arcing

I have cut down plate capacitor arcing by removing 1 turn from each supressor at the plate caps. Be sure to check for parasitics after the change. There shouldn't be a problem but one should check! (Manual ref. p 56, pictorial 4-15.)

73! from MARK - WB8JKR

THE OTHER FELLOW'S SHACK  
(de Bill, K2TNO)

1. ARRL Field Forum, July 1988: Finally an ARRL cartoon that Texas mobiles can understand.



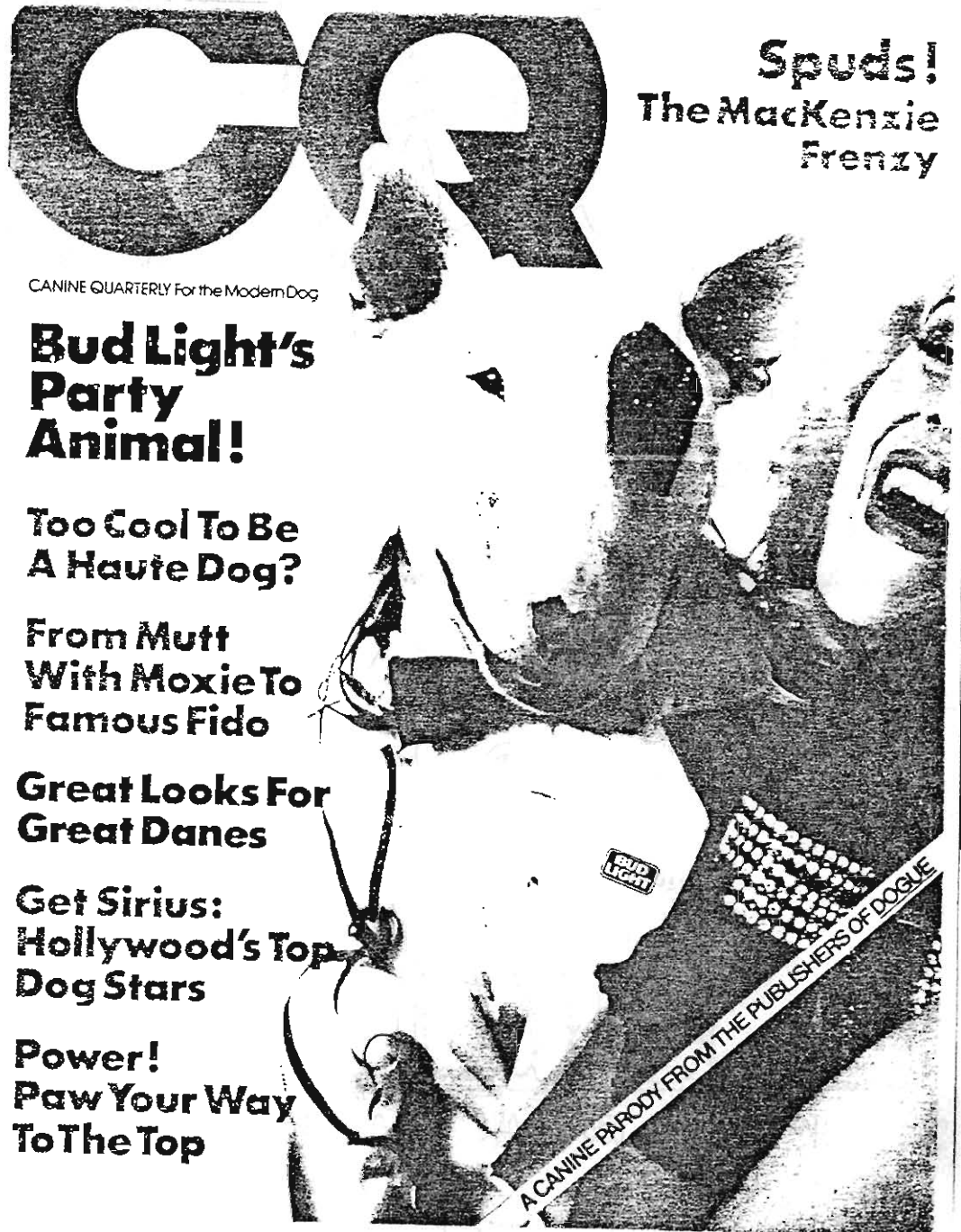
2. Kansas City DX Club Newsletter (May/June 1988).

Think everybody who's anybody in contesting and DX goes to Dayton? You bet! See the sign-in list from their suite, shown on the following page.



For You Dog - Xray Types  
(de Bill, K2TNO)

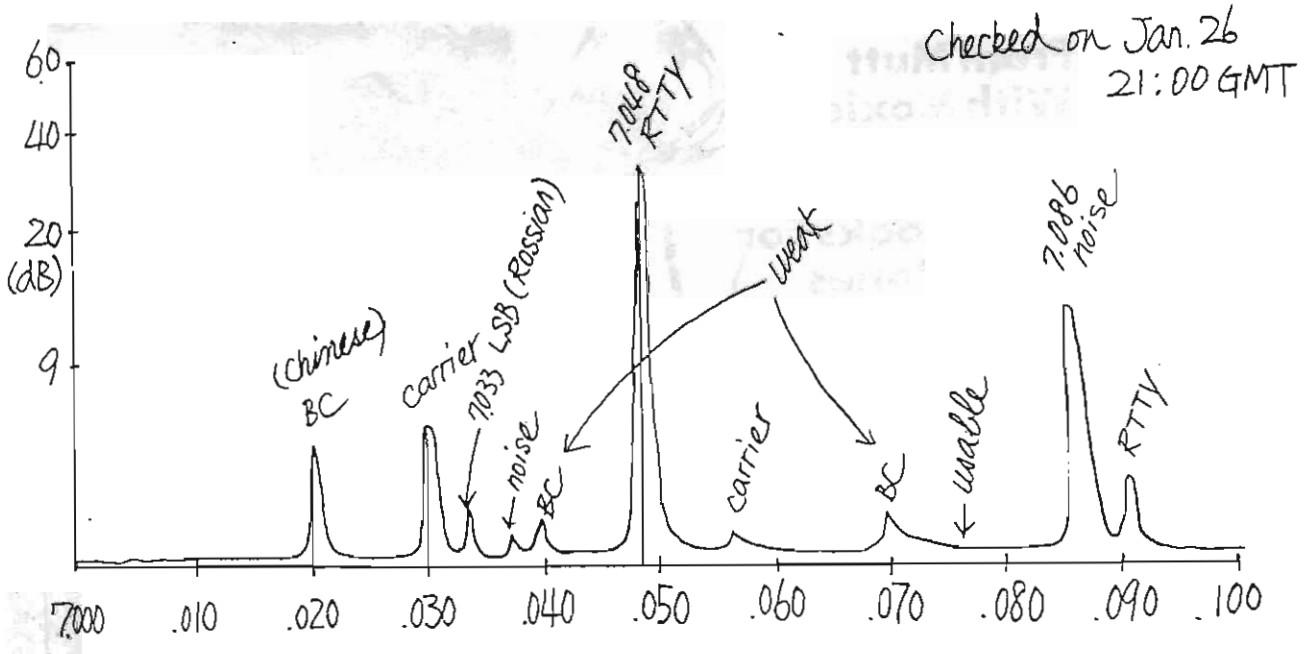
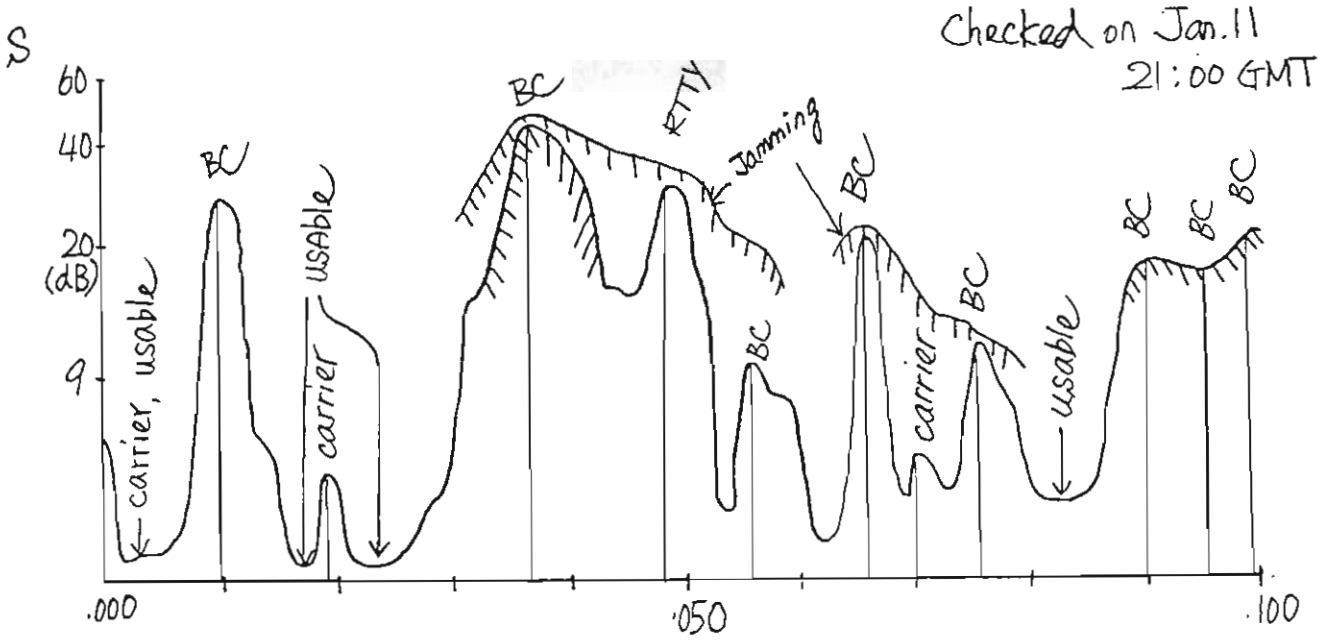
Here's a copy of the latest CQ, in case you missed it:



4. NTCC Newsletter (July 88):

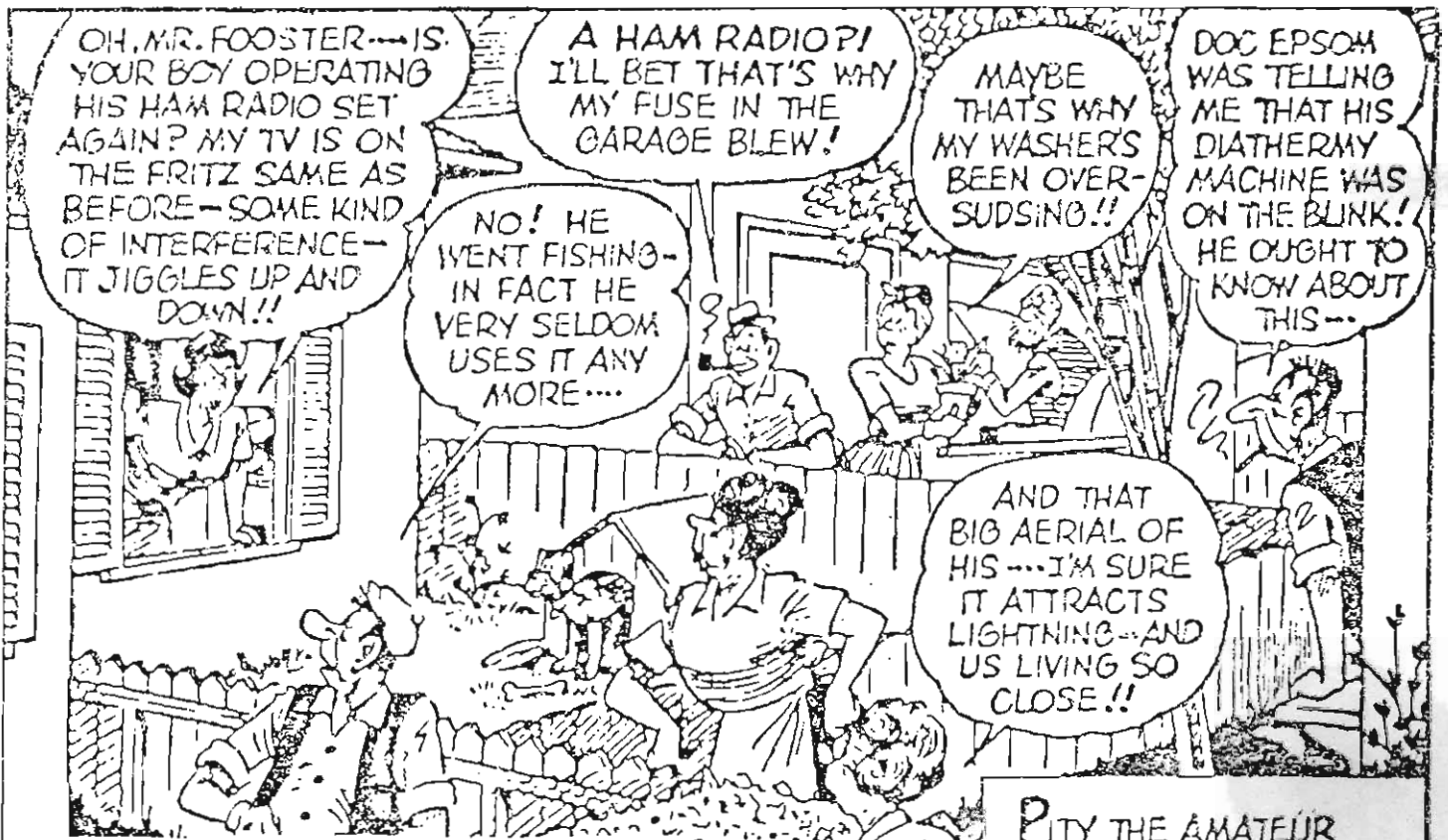
Think you have problems on 40? See the article below reprinted from JA-CQ March 1988: The top plot is before; the bottom is after.

Looking for Asians on 40? Red China has finally stopped broadcasting in the 40 meter ham band! DXing on 40 is now much better from the Asian operator's point of view. Note the signal density on 40 as seen on January 11 compared to January 26 of this year.  
73 -- Yan, NNST



Later, the weak broadcasting stations are identified as 2nd harmonics of Chinese BC on 80 meter band.

JA-CQ 3-88



OH, MR. FOOSTER--- IS YOUR BOY OPERATING HIS HAM RADIO SET AGAIN? MY TV IS ON THE FRITZ SAME AS BEFORE-- SOME KIND OF INTERFERENCE-- IT JIGGLES UP AND DOWN!!

A HAM RADIO? I'LL BET THAT'S WHY MY FUSE IN THE GARAGE BLEW!

NO! HE WENT FISHING-- IN FACT HE VERY SELDOM USES IT ANY MORE....

MAYBE THAT'S WHY MY WASHER'S BEEN OVER-SUDSING!!

DOC EPSOM WAS TELLING ME THAT HIS DIATHERMY MACHINE WAS ON THE BLINK! HE OUGHT TO KNOW ABOUT THIS--

AND THAT BIG AERIAL OF HIS --- I'M SURE IT ATTRACTS LIGHTNING-- AND US LIVING SO CLOSE!!

THEY'LL DO IT EVERY TIME

By Jimmy Hatlo

PITY THE AMATEUR RADIO OPS --- THEY GET BLAMED FOR EVERYTHING....  
AND A HAT TIP TO JIM FETTER, ROUTE 1, INVERNESS, FLA.