



THE BULL SHEET

OFFICIAL NEWS BULLETIN OF THE TEXAS DX SOCIETY

an ARRL affiliated club

VOLUME VII, NO. 6

JUNE, 1982

MEETING NOTICE: The June TDXS Meeting will be Friday, the 11th, at 7:30 P.M., at the Chimney Rock Medical Plaza, located at 6550 Mapleridge, which is near Bellaire General Hospital.

RADIOSPORT FROM TEXAS

The IARU Radiosport is a fun contest combining DX and Stateside on phone and CW. In RS you work everybody on the band - from locals, to DX, to maritime mobiles. However, since your own zone counts only one point per QSO, others in your continent 3 PPQ, and DX count 5 PPQ, the ratio of DX-to-Stateside is important. The multiplier is the sum of ITU zones worked per band. You can enter as single operator in three modes: phone only, CW only, and mixed-mode. Multi-operator groups enter as single-transmitter, mixed-mode.

Strategy for RS is somewhat mode-dependent. There is a basic philosophy, but each mode has its own wrinkles. I understand and prefer CW-only, so the general comments below have that orientation. The differences are highlighted later.

The total multiplier is small, which makes each one important. For example, a good show on any mode would be about 1350 QSOs and 100 mults for a score of 500,000. The rate is fairly high (37.5 QSOs/hour). The ratio of QSOs to mults is 13.5 to 1. This means that a new mult is as good as 13.5 new QSOs. At the average rate this means that 20 minutes spent on a new mult is not wasted time. This is the key point in RS strategy, the secret to success: The multiplier wins the contest. You practically should drop everything for a new mult. Just following that rule would get you a long way, but there is more - - you need to keep the rate up, too.

The varying PPQ can be deceiving as you try to maintain your rate. Remember, your score is QSO points times mult, not QSOs times mult. You must maximize the point rate. Last year my total QSOs broke down as 10% zone 7, 45% North America, and 45% DX. Essentially, 55% was Stateside. This means that the object is to spend most of your on-time on bands where DX QSOs will mix in with the W's you are running. Because of conditions (discussed below) 15 and 20 are the day-and night-time DX bands with some JA runs on 40. These are the bands on which you will spend most of your time. However, your band plan must include time for all important multipliers. You

have to leave good rate on 20 to get your EU and Africa on 40, for example, so you must balance rate and mult carefully. Take advantage of the fact that you are loud Stateside on 40 and 80, and bring in some fast QSO's while you scan the band.

Tom, K5RC, maintains that condx change every 15 minutes. It is a pretty good rule to follow in regard to band changes. Last year I made 95 band changes. I think about 110 would have been just right. That averages to one each 20 minutes or so. Band changes are very important to both multiplier and QSO totals, so set up your station and attitude to be ready to BOUNCE your way to a good score.

Single-operators must scatter 12 hours of off-time through the contest in at least 30 minute chunks. My strategy on code is to operate as much of the first 24 hours as possible (20-24 hours on-time) and take the rest in bits and pieces on Sunday. Suggested times are around 0800Z (1/2 hour only), 1800-2000 for sleep and maybe around 1130 or 2300. I assume an "expected average rate" and "worst hour rate" for my effort and station. The average rate sets my rate goal for each half hour of the contest. Half hour periods meaning the "worst hour rate" are considered for off-time. I calculate the actual average rate at the midpoint, 0000Z, and use 90% of it as my rate goal for the remainder of the contest. During the slower periods, each half hour should be evaluated with this goal in mind, e.g. "In the next half hour can I maintain this average rate?" If your judgment says no and you have no important chances at new mults coming up, then an offtime is in order. Last year, for example, I had only two hours off at 0000 Saturday night; the other ten hours were taken in several short segments throughout the night and the next day, except for a snooze around 1830.

Phone-only entrants will find that the rate is not steady as on CW, but comes in great spurts. The object is to make good on the spurts and scramble to make the slow times as profitable as possible or use them as off-times. The low band multiplier will be much harder due to QRN. But it can be made up with Africans and Asians that do not show on code. Also, the stray South American ragchewers on Sunday afternoon can net some valuable zones. If condx are normal, just try to maximize the QSO rate. Five W2's are just as good as three JA's and are usually far louder. But do not ignore the DX stations: Work to pick out the weaker guys, to get the DX stations as they call. In sporadic-E openings be extra mindful of your point rate. Phone-only entrants use more of their off-time at night, but Sunday is still the half with the most off-time.

Mixed-mode entrants do an extra job of juggling. Each station can be worked one per band, regardless of mode. Some will never get on code, others never on phone. I would say that 150 band/mode changes would be really good for mixed. Remember that there is more band to cover, so you must really scramble. Take advantage of both the phone spurts and the CW multipliers, and make your offtimes similar to the CW suggestions.

Multi-single entrants should really do best. Because multipliers are so important, two operators are needed all the time. One keeps the rate up and the other hunts for new zones. Drop everything to work a new zone. Remember that the 10-minute rule applies. The 10-minute period begins with your first QSO on the band. Separate stations would help a lot. Band changes will be fewer, but more fruitful since you can always be looking ahead.

Summertime propagation is in full swing for RS. 10M-short path openings to Europe and Asia are rare, but may happen anytime between SR and SS of the western end of the path. Openings over the pole are rarer but may happen at SR, around mid-day, and near midnight. Use skew-scatter over the Oceans and Africa for these areas. Africa, the Pacific, and South America (equatorial paths) are in for many hours, almost all day. A high-gain antenna helps on the marginal paths. 15M-this band can be incredible if condx are good. It can be a 24 hour a day band to SA. Europe and JA may be in at any hour. Openings to Asia are possible from sunrise to midnight. Keep the beam turning! Two antennas would really help. 20M-DX comes in from afternoon through late morning. The best rates are into EU after dark, since JAs are

limited on this band. The deep Asian zones and Pacific mix in early with EU before the JAs start to run, so the beam gets turned a lot here. Two antennas would be good on 20. Keep checking the band in the morning, especially on SSB. LP and Pacific can yield good zones. With Stateside in 24 hours a day, the rate can be kept up while working mults.

40M -- the key times for 40 are early in the evening and the hours before sunrise. A DX edge and/or sunrise table is essential on the low bands. Go early for the Eastern European zones, a little later for Western Europe and Africa. South Americans are in early through their sunrise. Work (run) JAs after their sunset. Texas is really loud on the coasts in July!

80M -- you will not keep the rate up on 80, but the few mults you can get there are worth the effort. With all the summer QRN you must work DX at their sunrise or at yours.

160M -- is just like 80 only more so. Get W and VE, anything else is icing on the cake.

The ITU zones are very different from the CQ zones used in WAZ and the CQWW DX tests. Familiarize yourself with these zones so that you will not miss anything out of ignorance. You may notice that the polar Russians, Africans, and Pacific account for many of the possible mults. This means you must keep the beam turning. Openings to these areas are an important part of your band strategy.

Above all, good operating leads to a good score. Good paperwork is important. Keep up your dupesheet. Keep close track of zones worked and needed. I put a list on the edge of each dupesheet and cross them off as they come in. I keep a running list of scheduled QSOs. Be sure to keep your off-times on a separate sheet — always know how much you have used and how much is left. Good station organization will speed your band changes and cut confusion during those sleepy periods. Especially, do not waste time!

GL, K5GN

WHO ARE THEY NOW?
THE TDXS "HOW QUICKLY WE FORGET" TRIVIA QUIZ
(Be careful, there are some ringers in there)

WA5NGH ()	W5WZQ ()	PY1ZCF ()
XELAN ()	W5OIB ()	W5IFY ()
W5QDW ()	WA4ZHU ()	W5TFC ()
WA5QVI ()	W5NMA ()	WA5LES ()
WB0NFY ()	K5PFL ()	FP8CB ()
YV6AW ()	K5LWL ()	WA6WTD ()
W5ZR ()	K5ETJ ()	W5TMI ()
WD5AEQ ()	K5EKJ ()	K5RLW ()
WA5OCN ()	W5RMC ()	W5QWX ()
W5CSN ()	WA5ZNY ()	K5LZJ ()
WA3OVC ()	WA2WBH ()	PY1ZDK ()
WA2GGB ()	WA5WQF ()	K5BSZ ()
WA5LMG ()	WB8FUO ()	W5OOW ()
W5SBX ()	KL7IDH ()	KA5CHW ()
W5RTQ ()	WA5WCT ()	ET3USA ()
K5KYU ()	WB2UFG ()	VP2GTL ()

ANSWERS, NEXT MONTH

(They are all current members, or have been in the last 3 years)

de K5RC

FIELD DAY REPORT

June 12th - Antennas and towers collected
June 13th - Trip to Demney site to tune and store antennas
June 24th - 27th - Field Day

OK gang, here we go again. Field Day is here and we're once again shooting for first place in the 3A category. The accompanying organizational chart should give everyone participating in FD an idea of station assignments taken and those left to be filled. I particularly need an experienced operator to serve as manager of the novice station. The antenna chairman and RV chairman for the novice station could be filled by our novice operators. Contact me if you're interested, otherwise a draft may be held (and I don't mean beer).

The RV's are fairly well organized at this writing. Please recognize that they are being paid for by the guys who rent them or own them. Any rules set by the renter/owner should be respected.

Bob, N5DU has included a sheet summarizing the 1981 FD highlights. We're looking for about 4500 QSO's again this year with an emphasis on cw since they count double the ssb QSO's. When we draw for operating positions on Saturday morning, please have the peak cw times for the cw ops. Trading for operating positions is OK.

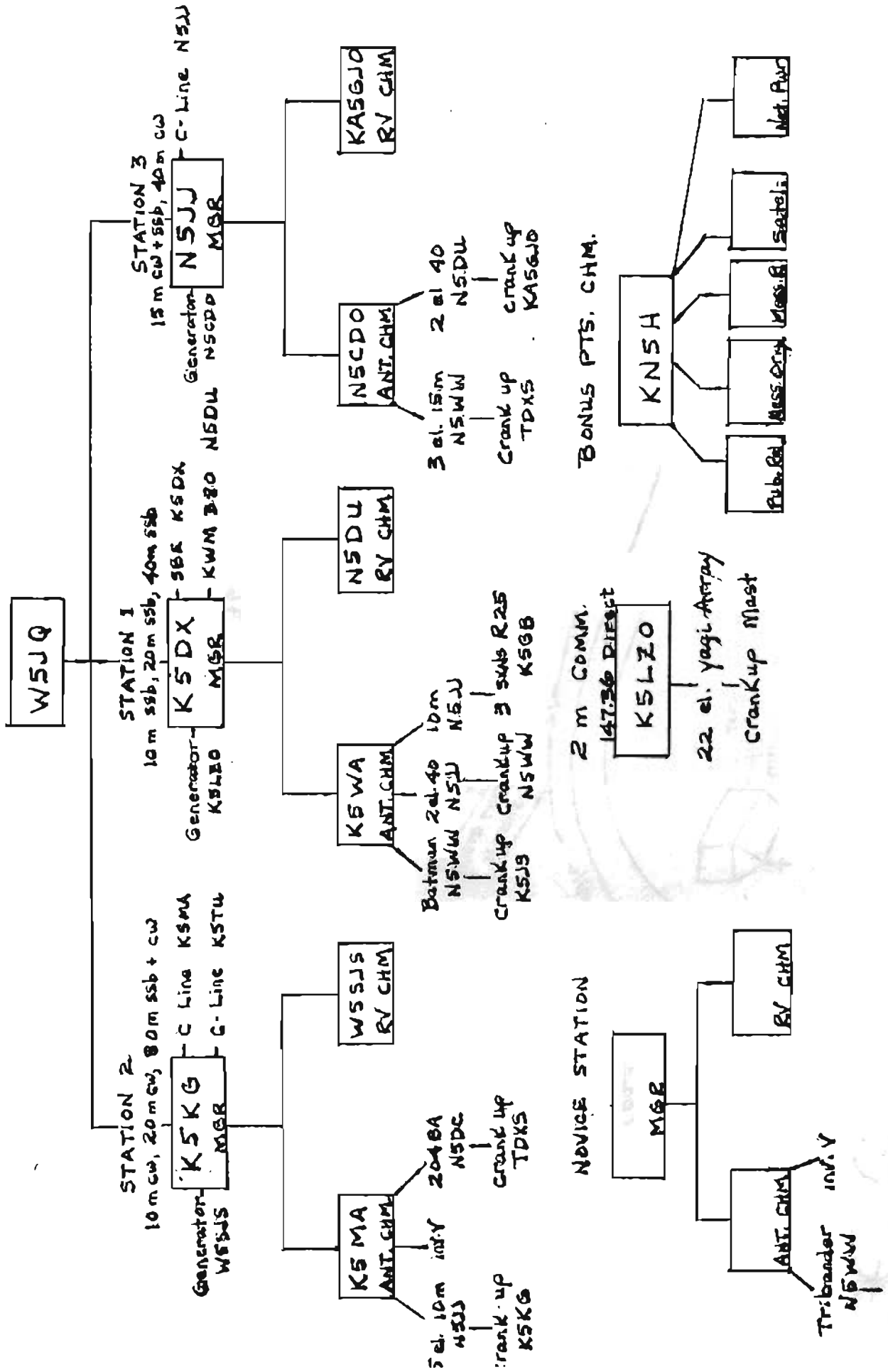
We will begin setup at 1 P.M. on Friday the 25th. We'll need as many strong backs as possible to get all of the towers and antennas in position, so please come as early as possible. Several of us will be there Thursday night. A map showing the location of the Demney Ranch (our FD site) is enclosed.

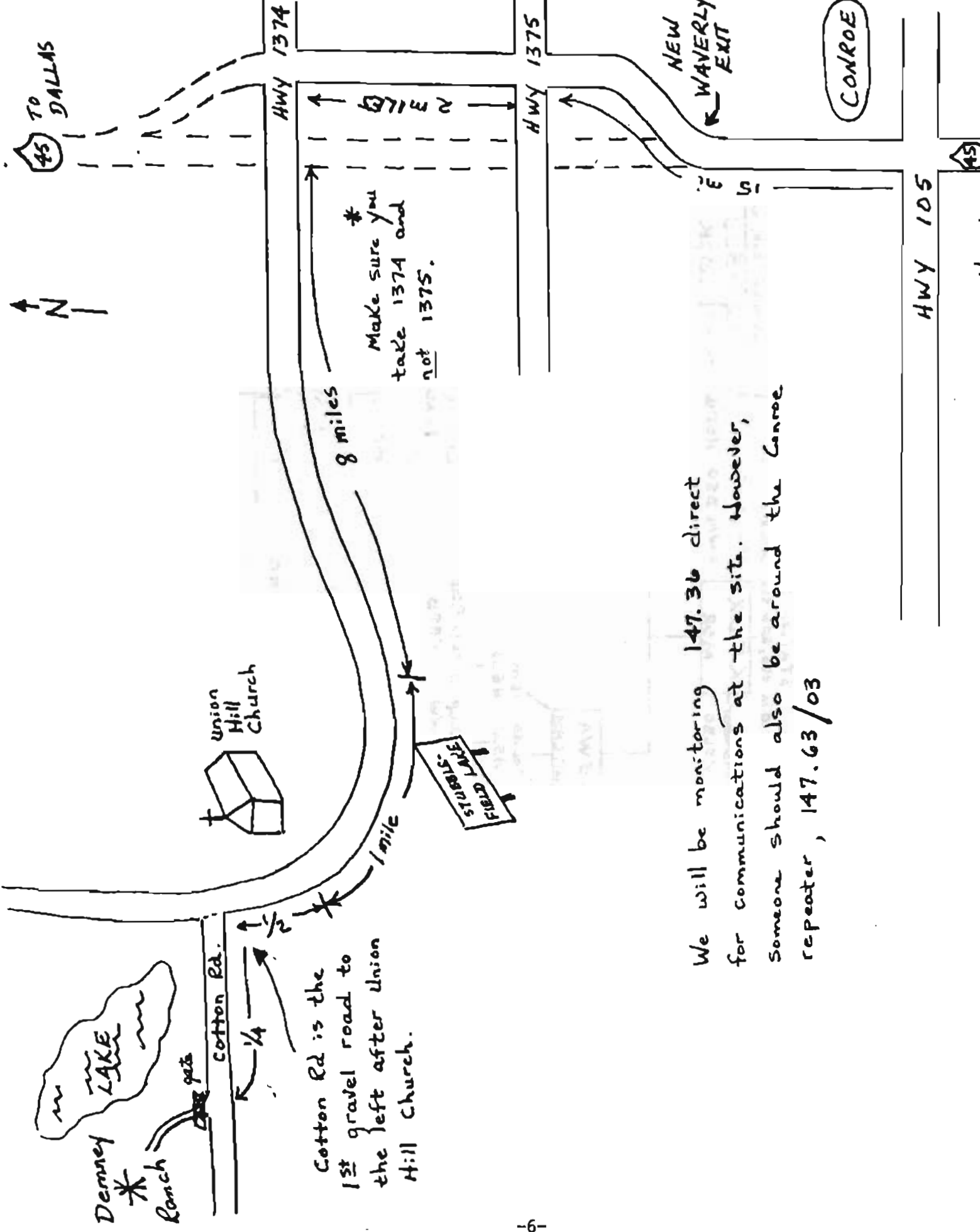
Bob and I will make our antenna and tower collection run on June 12th. This is the Saturday after the meeting, so the pickup schedule will be announced Friday night at the Medical Plaza. Looks like we have plenty of guys for the June 13th antenna tuning run, so if you have not filled your work assignment, we will always need people for pre-FD setup and post-FD takedown.

We're still in need of extra rotators, memory keyers, and 2 m handi-talkies (and anything else you have). See you at the meeting.

Jay Temple W5JQ
932-4700 (w)
370-2506 (h)

1982 TDXS FD ORGANIZATIONAL CHART





Cotton Rd is the 1st gravel road to the left after Union Hill Church.

We will be monitoring 147.36 direct for communications at the site. However, someone should also be around the Conroe repeater, 147.63/03

I HOPE EVERYBODY CAN READ THESE RECORDS WELL ENOUGH. WHAT WE HAVE HERE IS SOME INFO FOR YOU GUYS TO START PLANNING WHICH OPERATING SLOTS YOU WANT ON FIELD DAY.

INDIVIDUAL RECORD HIGHS (30 MINUTE MINIMUM)

<u>BAND</u>	<u>CALL</u>	<u>QSO'S/HR</u>	<u>YEAR</u>
6 SSB	K5NA	120	77
	WAS4EL	57	71
10 SSB	K5ZD	190.9	81
	W8SUSV	119	78
10 CW	K5NA	50	77
	K5MA	45	76
15 SSB	K5GN	110	81
	N5DU	106	80
15 CW	N5DU	81.5	81
	K5WA	71	79
20 SSB	K5NA	126	73
	K5ZD	124.6	81
20 CW	N5WW	74	81
	K5WA	69	81
40 SSB	W8SSFS	106	81
	K5JS	84	75
40 CW	N5JJ	65	81
	N5JJ	63	79
75 SSB	K5MA	57	79
	WASUHT	43	73
80 CW	KNSH	37.8	81
	KNSH	35.3	81

<u>BAND</u>	<u>RECORDS QSO'S</u>	<u>TOTAL</u>
NOVICE	516	81
OSCAR	20	81
6 SSB	305	77
10 SSB	281	81
10 CW	141	77
15 SSB	508	78
15 CW	597	77
20 SSB	1284	81
20 CW	917	81
40 SSB	438	78
40 CW	534	81
75 SSB	165	73
80 CW	104	81

3A

TOTAL ENTRY BREAKDOWN

<u>YEAR</u>	<u>SSB</u>	<u>CW</u>	<u>TOTAL</u>	<u>W/NO</u>
75	1139	1418	2557	275
76	959	793	1752	187
77	1728	1665	3393	374
78	2134	1405	3539	353
79	1620	1720	3340	366
80	1685	1434	3119	353
81	2060	2062	4122	463

- OVER -

YOUR HONORABLE FIELD DAY CHAIRMAN WANTS 4000 QSO'S THIS YEAR, SO HERE'S WHERE I THINK THEY WILL BE COMING FROM. THIS IS SIMPLY A FORECAST AND SHOULD NOT BE TAKEN AS GOSPEL, HOWEVER, IT CAN BE USED FOR AN OPERATOR TO CHOOSE HIS OPERATING SLOT. IF YOU DON'T FEEL CONFIDENT IN 60 Q'S PER HOUR ON CW, DON'T PICK THE OPENING HOUR ON 20 CW. THESE FIGURES ARE APPROXIMATELY 85% OF LAST YEAR'S ACTUAL. LOWER BANDS MAY BE MORE PRODUCTIVE THIS YEAR. GOOD LUCK

	10		15		20		40		80	
	CW	SSB	CW	SSB	CW	SSB	CW	SSB	CW	SSB
1800		26	15	66	59	70				
1900			26	42	58	94				
2000			15	27	53	66				
2100			27	13	53	67				
2200			24	13	47	66				
2300			20		45	65	16			
0000			34		53	67	9			
0100			36		58	77				
0200			2	19	36	57	26	14		6
0300					32	58	46	2		3
0400					41	27	33	5		3
0500						42	36			
0600					38	58	46		32	
0700					16	53	46		6	
0800							46		4	
0900							56	91	18	5
1000					3		53	71	30	
1100					20		28	43		
1200					34	72	31	1		
1300					38	53	29			
1400					38	58	21			
1500	23	90			14	26				
1600	34	97								
1700	2	32			50	60				
					64	80				

CARRY THIS IS HANDWRITTEN, I WAS

REPEATER QUESTIONNAIRE

Please bring your response to the June Meeting

What should be the main objectives of our repeater? Show at least four purposes in order of priority.

If you were solely responsible for the operation of the repeater (not technical maintenance) what changes would you want to make in its operation? What would you eliminate? What would you add?

How do you feel about the coverage of the repeater from its present location? If your answer indicates inadequate coverage state areas not covered which should be covered? Should the coverage be designed primarily for the benefit of TDXS members only? If yes, would you favor some sort of "Private Line"?

Are you dissatisfied with the location of the repeater? If so, why? Where should it be located?

Are you annoyed by ragchew operation on the repeater while monitoring from home? Are you interested in adding devices which would allow you to monitor only those transmissions reporting DX or contest activity?

For the repeater Chairman's benefit make comments concerning technical operation and maintenance of the machine. Is it satisfactory? Suggest changes. List them by priority.

Any other comments (please be brief!)